

## MEMORANDUM

**DATE:** July 13, 2021

**TO:** Mayor & City Council  
**CC:** Mercy Rushing, City Manager

**FROM:** David Madsen

**SUBJECT:** **Council Meeting Agenda Item:** Proposed Alternate Tower Location

**Background Information:** The City council has previously approved a location for a new communications tower. The location was proposed to be at the end of Bromberg. While getting a bid package prepared, it was learned that the FAA has to approve any tower location. The site was submitted to FAA and it was determined that it is not in a direct line to the runway, it is with the 3 mile area that FAA looks at. It is 2.09 Nautical Miles from Wisener Field in Mineola. The FAA would only allow a tower of 230 feet and 630 feet above sea level. This could propose a decrease in communication coverage for the fire department. He staff has looked an alternative location on CR 2724 on the nature preserve property north of the main entrance. I have attached a proposed location map. The FAA has given a favorable determination of a 281 foot tower with 675 feet above sea level. This increase in height would give better radio coverage than the previous proposed location. The Fire Department is requesting that the City Council approve the proposed location for a new radio communications tower.

**Recommendation:** Staff recommends approval.

**Final Disposition:**

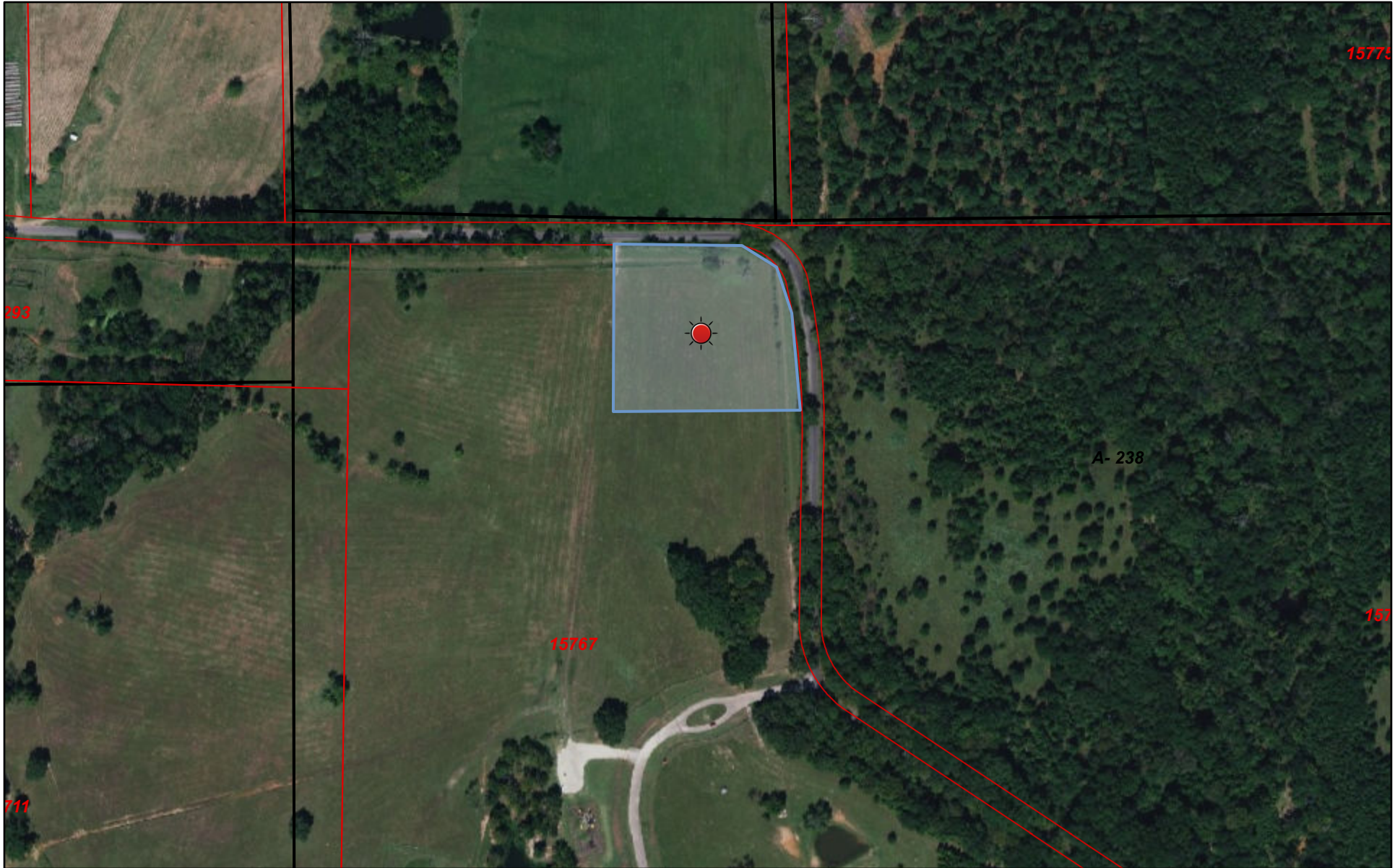
# Proposes Tower Location

Write a description for your map.

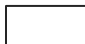

Legend

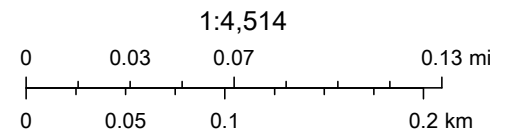


# Wood CAD Web Map



7/13/2021, 4:20:31 PM

-  Abstracts
-  Parcels

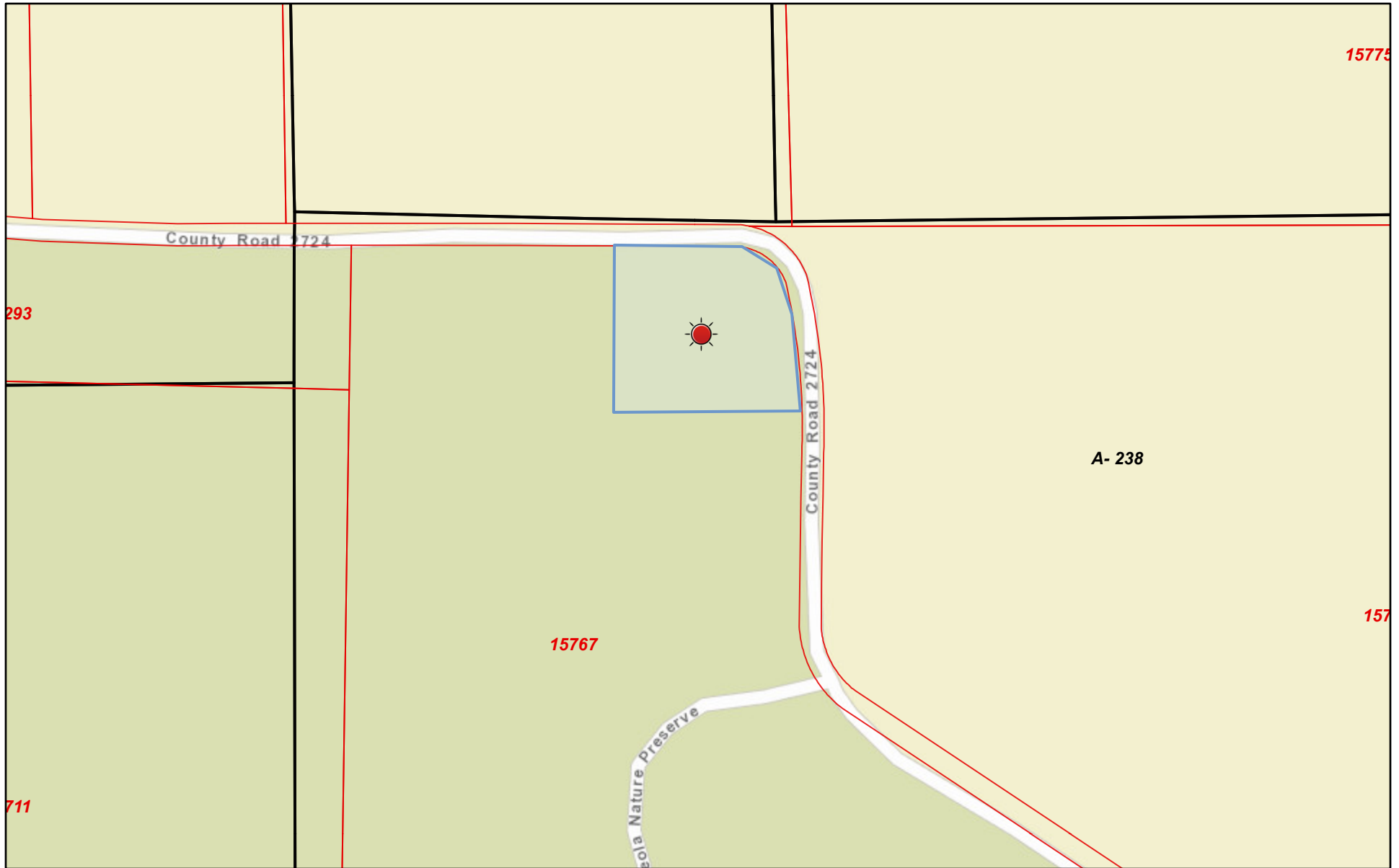


© OpenStreetMap (and) contributors, CC-BY-SA



Wood County Appraisal District, BIS Consulting - [www.bisconsulting.com](http://www.bisconsulting.com)

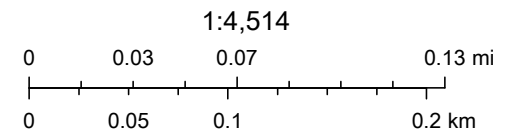
Disclaimer: This product is for informational purposes only and has not been prepared for or be suitable for legal, engineering, or surveying purposes. It does not represent an on-the-ground survey and represents only the approximate relative location of boundaries.

# Wood CAD Web Map



7/13/2021, 4:18:55 PM

-  Abstracts
-  Parcels



Esri, HERE, Garmin, INCREMENT P, NGA, USGS

Wood County Appraisal District, BIS Consulting - [www.bisconsulting.com](http://www.bisconsulting.com)

Disclaimer: This product is for informational purposes only and has not been prepared for or be suitable for legal, engineering, or surveying purposes. It does not represent an on-the-ground survey and represents only the approximate relative location of boundaries.